



Contact

■ Tokyo Office

Shin-Marunouchi Bldg., 1-5-1, Marunouchi, Chiyoda-ku, Tokyo, 100-6511, Japan

Tel. +81-3-6665-9292 / Fax. +81-3-6800-5804

Direct access from Tokyo Station (Marunouchi underground concourse, Exits M7/M9).

Online consultations available via Zoom or Microsoft Teams.

■ Kyoto office

Kyoto Miyuki Bldg., 9F, #905, 689, Takanna-cho, Nakagyo-ku, Kyoto-shi, Kyoto,

604-8153, Japan

Tel. +81-75-744-0940

One-minute walk from Kyoto Municipal Subway Karasuma Line, Shijo Station (Exit 22).

Online consultations available via Zoom or Microsoft Teams.



Scan to visit our website: <https://en.lexceed.or.jp>

Email: info@lexceed.or.jp

More Information



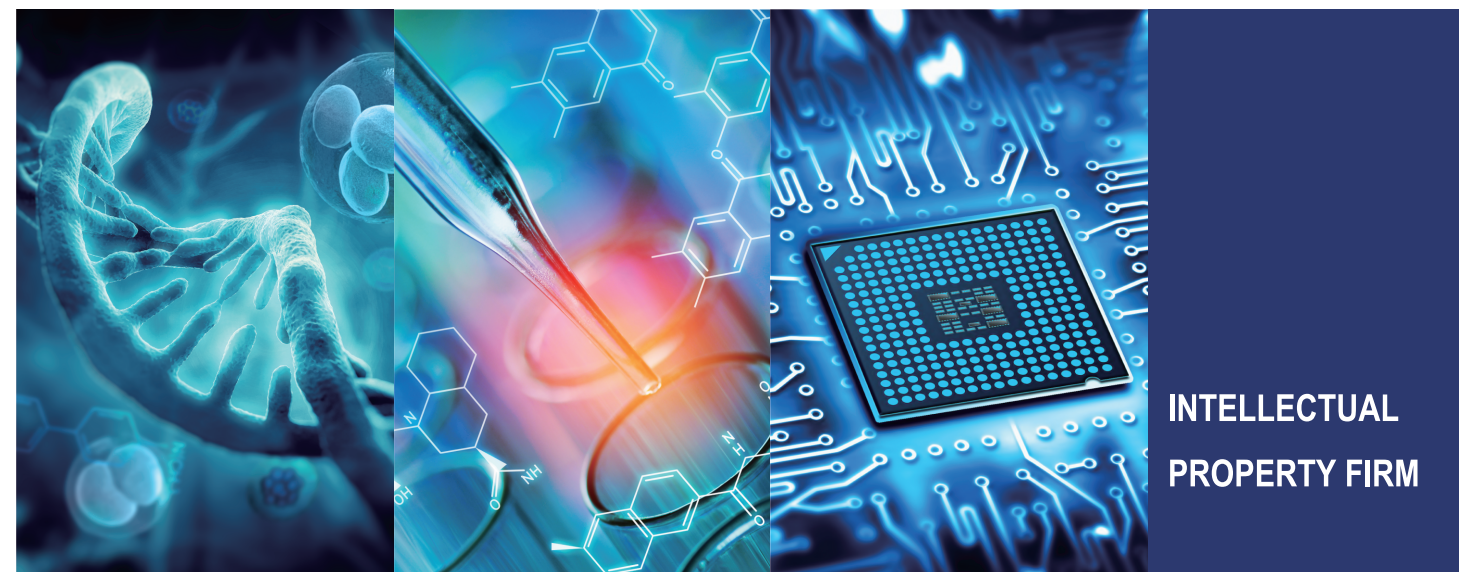
For more details, scan to access our Box folder:

<https://lexceed-tech.box.com/s/fyvdfky09a5yg3pbvwz2b07ho3sa87xq>



LEXCEED

IP LAW FIRM & LEGAL PROFESSIONAL CORPORATION



INTELLECTUAL
PROPERTY FIRM

<https://en.lexceed.or.jp>

IP Law Firm Lexceed Tech

- **Established:** July 1, 2022
- **Locations:** Tokyo and Kyoto, Japan
- **Total Staff:** 15 (Tokyo 8, Kyoto 7)
 - **Professionals:** 1 attorney-at-law, 6 Japanese patent attorneys, 2 technical specialists, 1 search specialist
 - **Academic Degrees:** 5 Ph.D.s, 2 M.S., and 2 B.S. (primarily in pharmaceuticals, biotechnology, and chemistry)
 - **Support Team:** 6 highly experienced paralegals/administrative staff
- **Core Services:** One-stop IP services including prosecution, contracts, expert opinion, patent search (prior art, invalidation, freedom-to-operate, etc.) and analysis, start-up support, disputes, and litigation
- **Main Technical Expertise:** Pharmaceuticals, biotechnology, and chemistry
- **Client Base:** Domestic/multinational corporations, universities, research institutes, and start-ups
- **Languages:** Japanese and English
- **Professional Memberships:** JPAA, AIPPI, APAA
- **Global Reach:** Trusted partnerships with IP law firms in 20+ countries

Our IP Law Services

—Synergy through Close Collaboration of Legal and Technical Experts—

- **We provide high-quality legal services** delivered by attorneys **with strong technical backgrounds**.
- **Our work covers domestic and international filing procedures** (patents, utility models, designs, and trademarks), rights acquisition, expert opinions on validity and infringement, enforcement, negotiations, contracts, and patent searches related to IP disputes (including patents, utility models, designs, trademarks, copyrights, breeder’s rights, and trade secrets).
- **We also specialize in IP strategy consulting** for pre-incorporation commercialization, support from the business-strategy formulation stage for start-ups and SMEs, and building IP strategies aligned with business objectives.

Why Choose Us?

—One-Stop IP Services especially in Pharmaceuticals, Biotechnology, and Chemistry—

- **Global Prosecution** – Extensive experience, particularly in pharmaceuticals, biotechnology, and chemistry
- **Start-up Support** – Tailored assistance for emerging companies and entrepreneurs
- **Patent Searches & Analysis** – Comprehensive research and clear reporting to support IP strategies
- **Invalidation Proceedings** – Expertise in challenging and defending patent validity
- **Expert Opinions** – In-depth assessments to guide strategic decision-making
- **Contracts & Negotiation** – Drafting, reviewing, and negotiating IP-related agreements
- **Disputes & Litigation** – Effective representation in conflict resolution and court proceedings
- **IP Strategy & Consulting** – Advisory services to maximize IP value
- **Seminars & Training** – Practical programs to enhance IP literacy

 <div>IP and Law</div> <div>1 attorney-at-law, 6 Japanese patent attorneys, 2 technical specialists, and 1 search specialist</div>	 <div>Technical Background</div> <div>5 Ph.D.s, 2 M.S., 2 B.S. (primarily in pharmaceuticals, biotechnology, and chemistry)</div>	 <div>One-stop IP Services</div> <div>Prosecution, contracts, expert opinion, patent search and analysis, start-up support, disputes, litigation, etc.</div>
 <div>Patent Search</div> <div>Grand Prize – Patent Search Grand Prix, Industrial Property Cooperation Center (IPCC)</div>	 <div>Start-up Support</div> <div>Extensive experience assisting innovative ventures and entrepreneurs</div>	 <div>Global Communication</div> <div>Strong expertise in cross-border collaboration and multilingual communication</div>

Collaboration with Lexceed LPC

- **The Lexceed Group** comprises **Lexceed LPC** (general corporate law) and **IP Law Firm Lexceed Tech** (technology-related legal affairs).
- **The Group brings together a large number of professionals** in corporate law and intellectual property, **with offices across major cities in Japan**.

We are committed to delivering innovative and effective intellectual property solutions, **combining deep technical expertise with a truly global perspective**.

